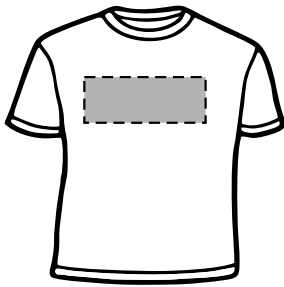


Standard Clothing Design Size

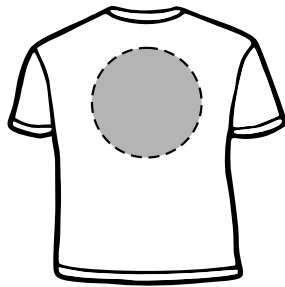
* These are suggested positions and sizes based on industry standards.

Full Front



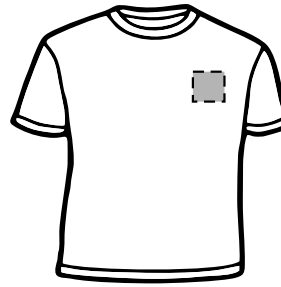
Adult - 11.5" wide x 11" tall
Youth - 9.5" wide x 11" tall

Full Back



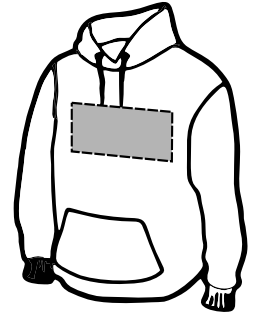
Adult - 11.5" wide x 13" tall
Youth - 9.5" wide x 12" tall

Crest Front



Adult - 4" wide x 4" tall
Youth - 4" wide x 4" tall

Hoodie Front



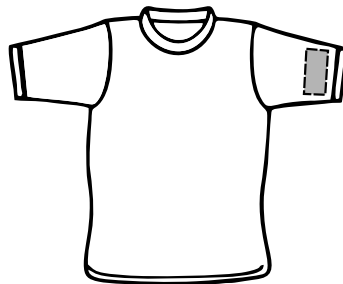
Adult - 11.5" wide x 10" tall
Youth - 9.5" wide x 7.5" tall

Long Sleeve



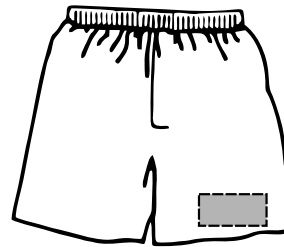
Adult - 11.5" wide x 11" tall
Youth - 9.5" wide x 11" tall

Short Sleeve



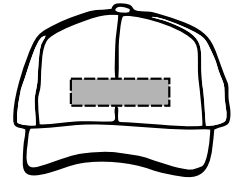
Adult - 11.5" wide x 11" tall
Youth - 9.5" wide x 11" tall

Shorts Front



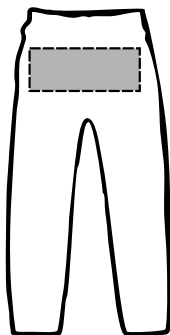
Adult - 11.5" wide x 11" tall
Youth - 9.5" wide x 11" tall

Hats



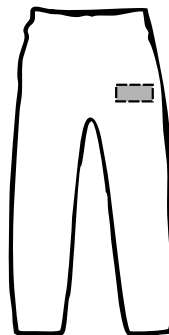
Adult - 11.5" wide x 11" tall
Youth - 9.5" wide x 11" tall

Butt Print



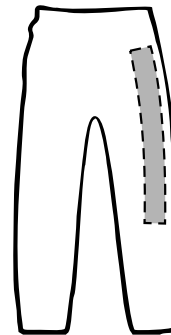
Butt Print - shorts or Pants
Adult - 11" wide x 3" tall
Youth - 9.5" wide x 2.5" tall

Sweatpants Front



Sweatpants Front
Adult & Youth
4.5" wide x 4.5" tall

Sweatpants Down Leg



Down Leg of Sweatpants
Adult Only
5.5" wide x 17" tall

MICHIGAN
Specialty Paper

www.michiganspecialtypaper.com • sales@michiganspecialtypaper.com